



# High Flux Hollow Fiber Hemodialysis Dialyzer PC Series

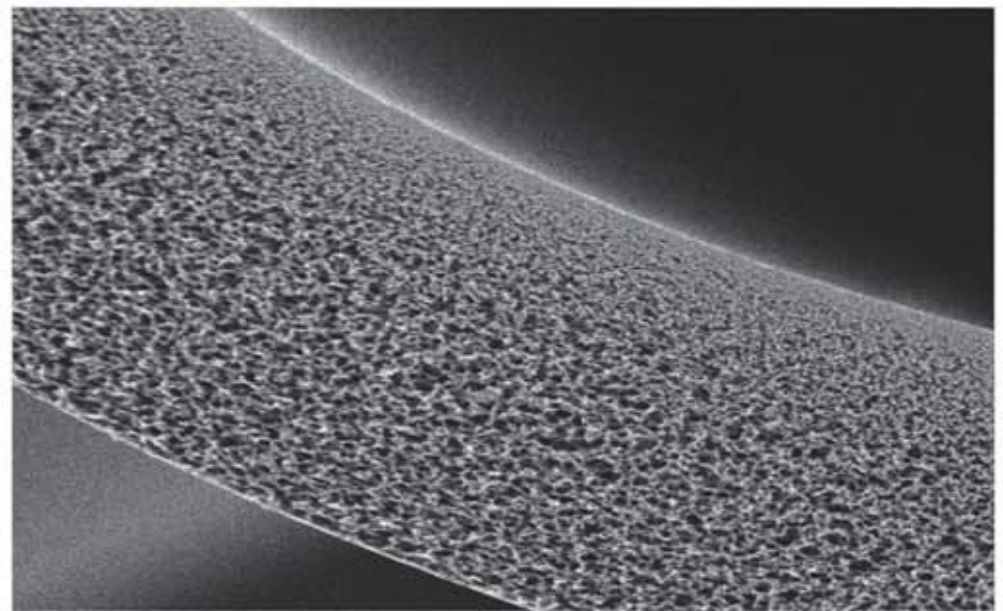
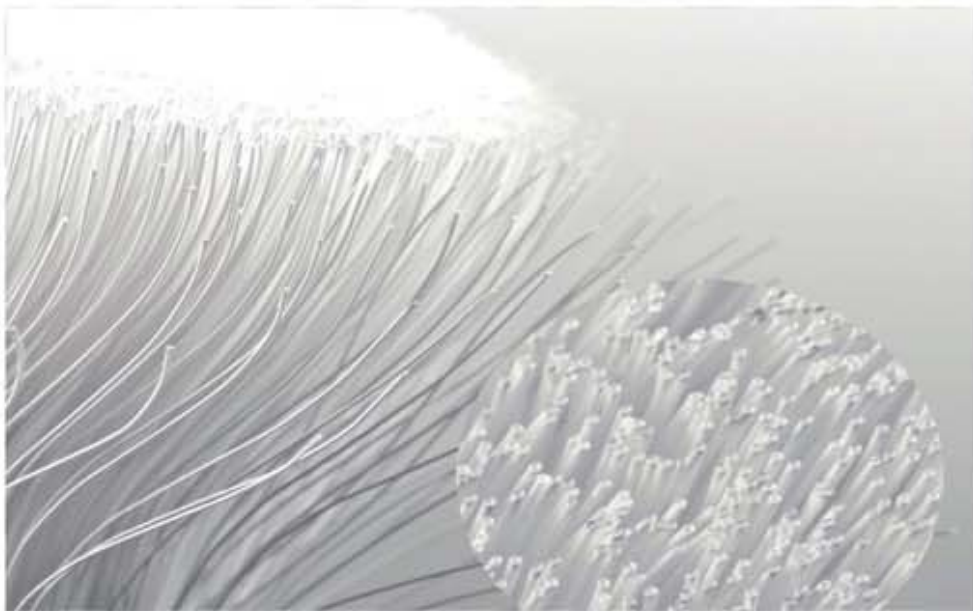


# FARMACARB HEMODIALYZER

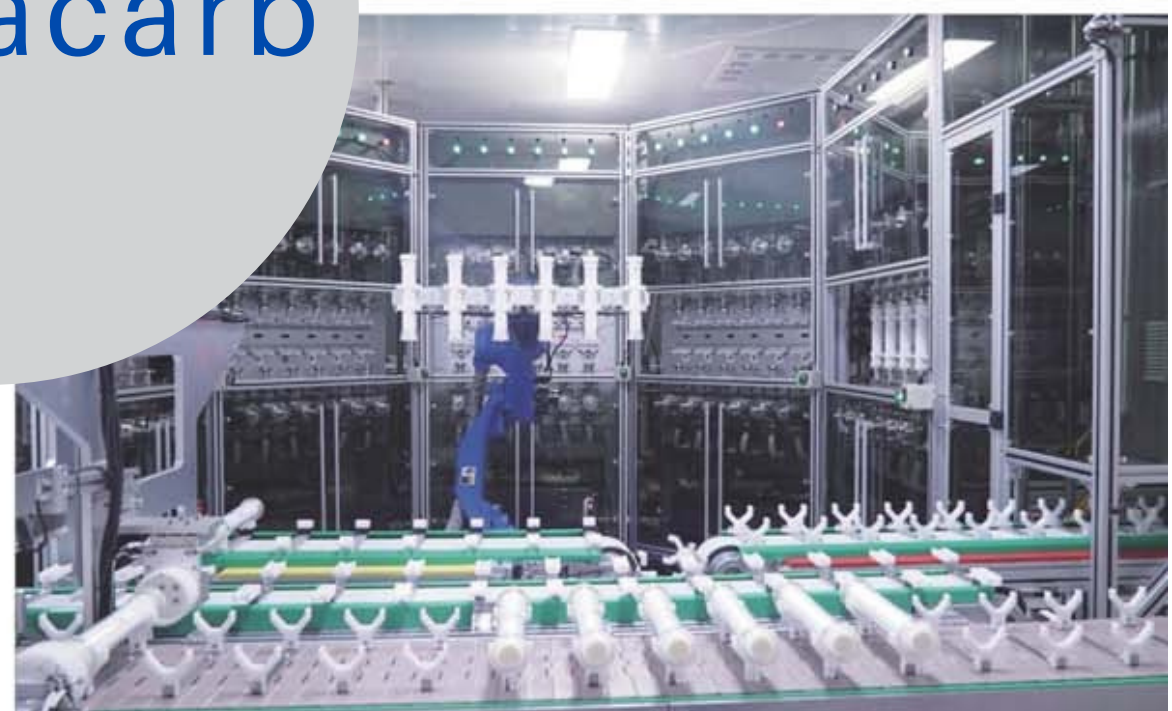
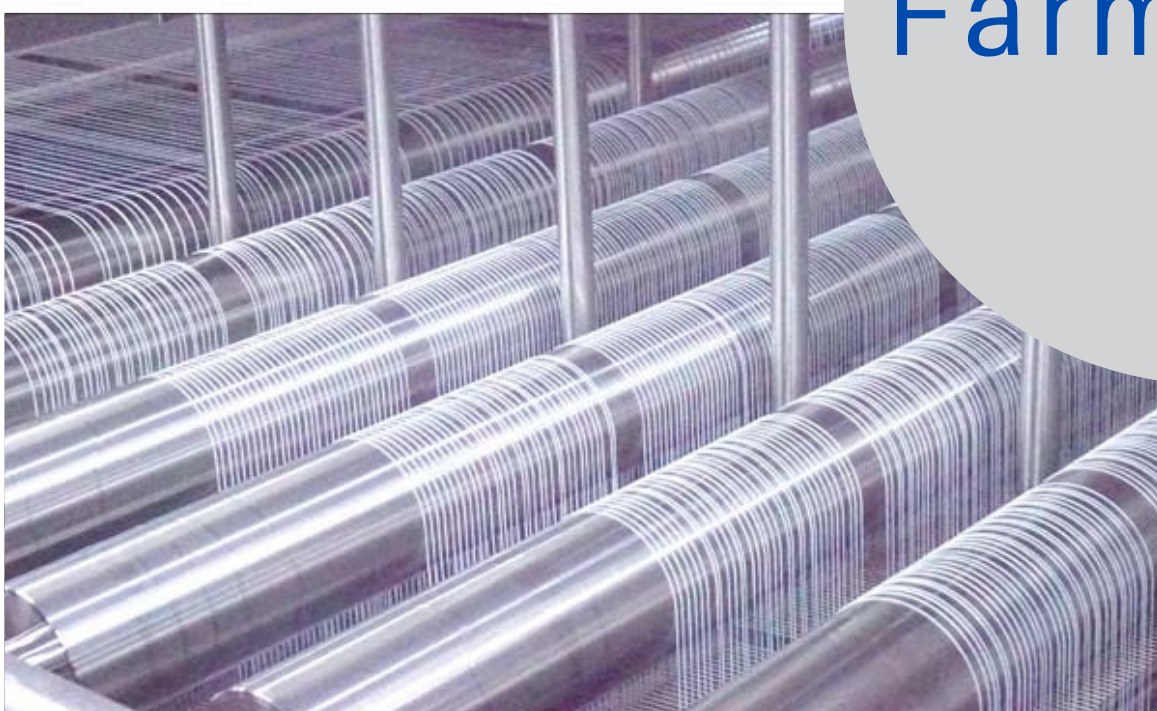
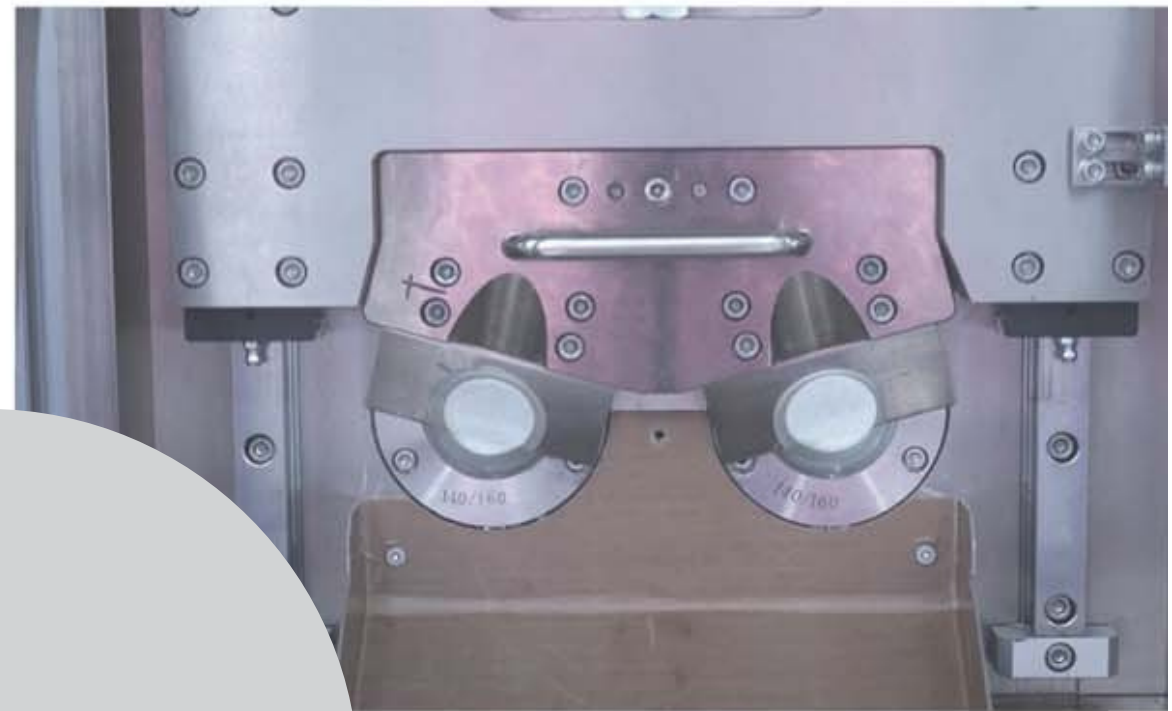


## Features

- Excellent biocompatibility.
- Good Anticoagulant function
- Effective screening of endotoxin and pyrogen in dialysate
- Dialyzer membrane imported from Germany with P.E.T proprietary technology.



Fully automatic production workshop.

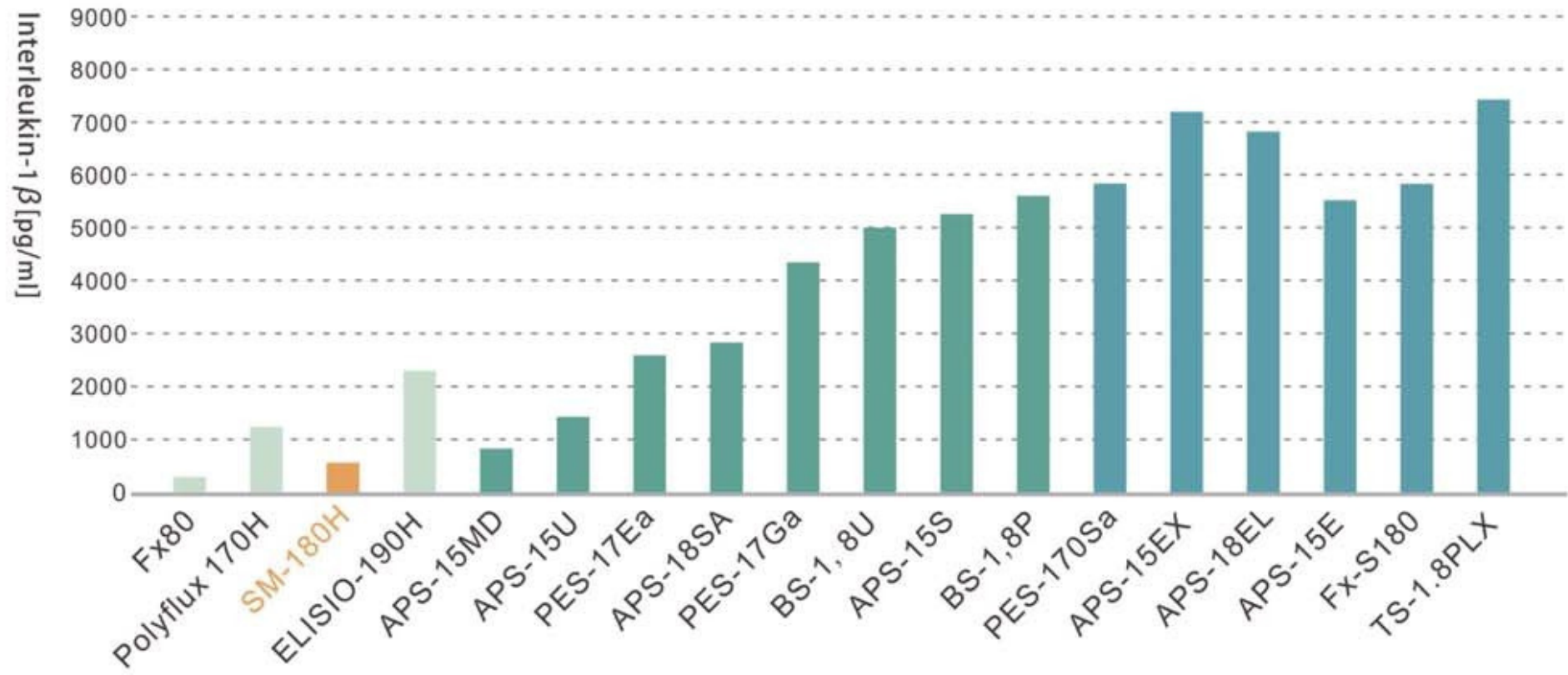


Farmacarb

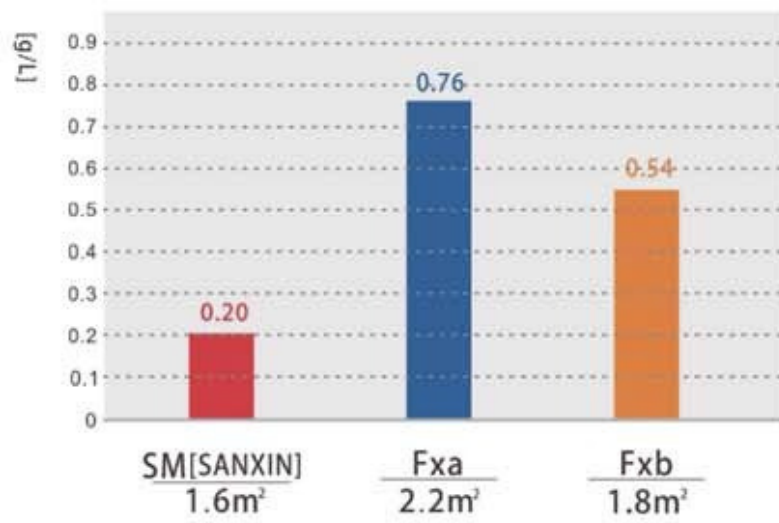




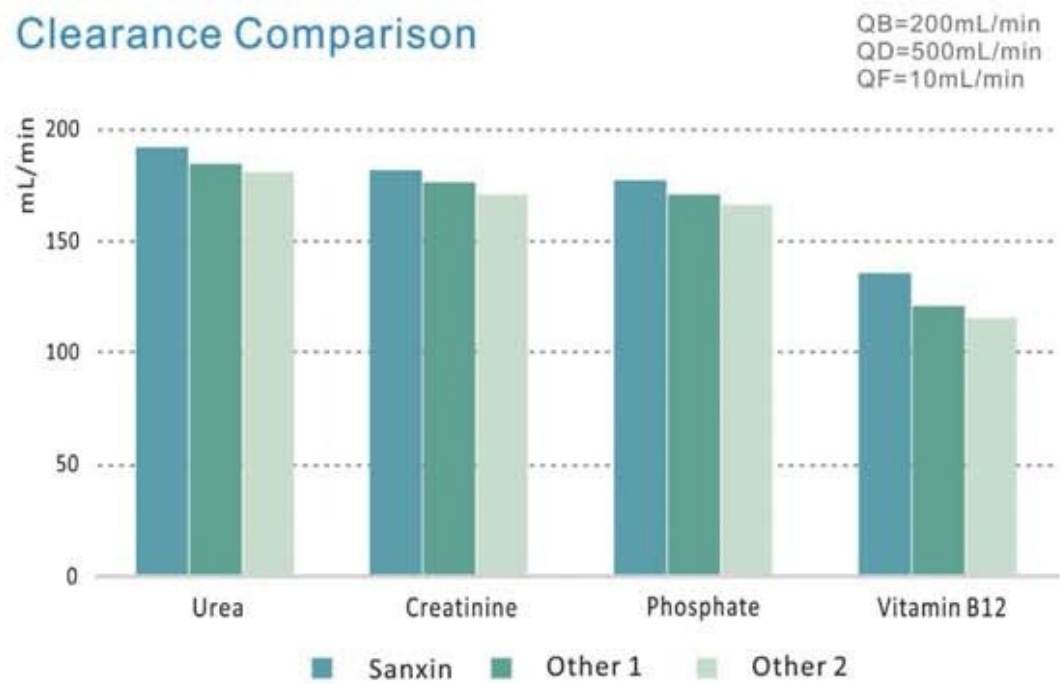
### Heat source interception effect of high flux dialyzer with different permeability



### Minimal protein loss



### Clearance Comparison



- High efficiency of dispersion
- Good-exdotoxin interception capability
- Best biocompatibility



Specification	SM120H	SM130H	SM140H	SM150H	SM160H	SM170H	SM180H	SM190H	SM200H	SM210H
Effective membrane area(m <sup>2</sup> )	1.2	1.3	1.4	1.5	1.6	1.7	1.8	1.9	2.0	2.1
Chamber volumn (mL)	75	80	85	90	95	102	110	115	120	123
Pressure drop dialysate (mmHg)	78	72	68	64	60	56	53	50	47	44
Q <sub>D</sub> =500mL/min										
ultrafiltrate coefficient (mL/h·mmHg)	44	47	50	55	60	62.5	65	67.5	70	71
Q <sub>D</sub> =200mL/min; TMP=100mmHg										
Maximum blood flow (mL/min)					400					
Sieving Coefficient					0.9*(1±10%)					
Inulin					≥0.6					
β2-microglobulin					≥0.5					
Myoglobin					≤0.01					
Albumin										
Test condition	Q <sub>B</sub> =200mL/min; Q <sub>D</sub> =500mL/min; Q <sub>F</sub> =10mL/min									
Urea (mL/min)	191	192	193	194	195	196	197	197	198	199
Creatinine (mL/min)	179	180	181	183	185	187	190	192	195	196
Phosphate (mL/min)	176	177	178	179	181	183	185	187	190	193
Vitamine B <sub>12</sub> (mL/min)	130	132	135	140	155	160	165	170	175	176
Test condition	Q <sub>B</sub> =300mL/min; Q <sub>D</sub> =500mL/min; Q <sub>F</sub> =10mL/min									
Urea (mL/min)	255	257	260	263	267	271	275	277	280	282
Creatinine (mL/min)	230	235	240	245	250	255	260	265	270	272
Phosphate (mL/min)	215	220	225	230	235	242	250	256	262	264
Vitamine B <sub>12</sub> (mL/min)	135	142	150	160	175	185	195	201	208	208
Test condition	Q <sub>B</sub> =400mL/min; Q <sub>D</sub> =500mL/min; Q <sub>F</sub> =10mL/min									
Urea (mL/min)	280	285	290	300	320	325	330	335	340	342
Creatinine (mL/min)	260	265	270	280	295	300	305	311	317	318
Phosphate (mL/min)	240	250	260	270	280	287	295	300	305	308
Vitamine B <sub>12</sub> (mL/min)	150	155	160	170	190	195	200	206	212	234

Farmacarb Kimya San. ve Tic. A.Ş.  
Susuz Mah. 3796.C No:19  
Yenimahalle/Ankara, 06105, TURKEY  
Tel 00905392338952  
sales@farmacarb.com.tr



www.farmacarb.com.tr  
www.emce.com.tr

Specification	SM120H	SM130H	SM140H	SM150H	SM160H	SM170H	SM180H	SM190H	SM200H	SM210H
Effective membrane area(m <sup>2</sup> )	1.2	1.3	1.4	1.5	1.6	1.7	1.8	1.9	2.0	2.1
Chamber volumn (mL)	75	80	85	90	95	102	110	115	120	123
Pressure drop dialysate (mmHg)	78	72	68	64	60	56	53	50	47	44
Q <sub>D</sub> =500mL/min										
ultrafiltrate coefficient (mL/h·mmHg)	44	47	50	55	60	62.5	65	67.5	70	71
Q <sub>D</sub> =200mL/min; TMP=100mmHg										
Maximum blood flow (mL/min)					400					
Sieving Coefficient					0.9*(1±10%)					
Inulin					≥0.6					
β2-microglobulin					≥0.5					
Myoglobin					≤0.01					
Albumin										
Test condition	Q <sub>B</sub> =200mL/min; Q <sub>D</sub> =500mL/min; Q <sub>F</sub> =10mL/min									
Urea (mL/min)	191	192	193	194	195	196	197	197	198	199
Creatinine (mL/min)	179	180	181	183	185	187	190	192	195	196
Phosphate (mL/min)	176	177	178	179	181	183	185	187	190	193
Vitamine B <sub>12</sub> (mL/min)	130	132	135	140	155	160	165	170	175	176
Test condition	Q <sub>B</sub> =300mL/min; Q <sub>D</sub> =500mL/min; Q <sub>F</sub> =10mL/min									
Urea (mL/min)	255	257	260	263	267	271	275	277	280	282
Creatinine (mL/min)	230	235	240	245	250	255	260	265	270	272
Phosphate (mL/min)	215	220	225	230	235	242	250	256	262	264
Vitamine B <sub>12</sub> (mL/min)	135	142	150	160	175	185	195	201	208	208
Test condition	Q <sub>B</sub> =400mL/min; Q <sub>D</sub> =500mL/min; Q <sub>F</sub> =10mL/min									
Urea (mL/min)	280	285	290	300	320	325	330	335	340	342
Creatinine (mL/min)	260	265	270	280	295	300	305	311	317	318
Phosphate (mL/min)	240	250	260	270	280	287	295	300	305	308
Vitamine B <sub>12</sub> (mL/min)	150	155	160	170	190	195	200	206	212	234

Farmacarb Kimya San. ve Tic. A.Ş.  
Susuz Mah. 3796.Cad  
No:19 . 3796 Cad. No:19  
Yenimahalle/Ankara, 06105, TURKEY



Tel 00905392338952  
sales@farmacarb.com.tr

www.farmacarb.com.tr  
www.emce.com.tr





Specification	SM120L	SM130L	SM140L	SM150L	SM160L	SM170L	SM180L	SM190L	SM200L	
Effective membrane area(m <sup>2</sup> )	1.2	1.3	1.4	1.5	1.6	1.7	1.8	1.9	2.0	
Chamber volumn (mL)	74	77	80	88	96	101	106	114	116	
Pressure drop dialysate (mmHg)	78	72	68	64	60	56	53	50	47	
Q <sub>D</sub> =500mL/min										
ultrafiltrate coefficient (mL/h·mmHg)	12	13	14	15	16	17	18	19	20	
Q <sub>B</sub> =200mL/min; TMP=100mmHg										
Maximum blood flow (mL/min)	400									
Test condition	Q <sub>B</sub> =200mL/min; Q <sub>D</sub> =500mL/min; Q <sub>F</sub> =10mL/min									
Clearance	Urea (mL/min)	175	176	177	181	186	190	191	192	193
	Creatinine (mL/min)	159	160	161	169	178	181	183	184	185
	Phosphate (mL/min)	150	152	155	157	165	166	167	168	170
	Vitamine B <sub>12</sub> (mL/min)	95	100	105	106	107	112	115	117	120
Test condition	Q <sub>B</sub> =300mL/min; Q <sub>D</sub> =500mL/min; Q <sub>F</sub> =10mL/min									
Clearance	Urea (mL/min)	225	227	229	236	243	247	251	253	256
	Creatinine (mL/min)	211	212	214	217	220	225	231	234	238
	Phosphate (mL/min)	200	206	213	216	220	225	230	235	240
	Vitamine B <sub>12</sub> (mL/min)	100	106	112	114	116	120	125	130	135
Test condition	Q <sub>B</sub> =400mL/min; Q <sub>D</sub> =500mL/min; Q <sub>F</sub> =10mL/min									
Clearance	Urea (mL/min)	257	261	266	270	275	280	285	290	295
	Creatinine (mL/min)	219	225	229	238	248	252	257	261	266
	Phosphate (mL/min)	205	224	243	244	245	247	250	255	260
	Vitamine B <sub>12</sub> (mL/min)	106	118	130	132	135	137	140	145	150